

SA P8440-M71 is the ultra-rugged 2D imager 4.0" Android Mobile computer, which is ideal for enterprises requiring anywhere, anytime connectivity and fast data capture for maximum uptime and productivity out in the field or on the selling floor.

With 4G connectivity and long-lasting battery power, this mobile computer has smart phone function and ensure 14 hours connectivity to business-critical data and systems. In addition, the device can provide more flexible applications with embedded Wifi, Bluetooth 4.0 and GPS function.

Except the powerful 2D imager scan engine for decoding all standard 1d and barcode from the printed labels and screen, this device is also integrated with 8Mega/13Mega camera, which provide more applications for users.

The sleek and rugged housing fits easily into a pocket for users and its IP67 rating against dust/water spray; can withstand multiple 1.8m drops to concrete and 1,600* 0.5meter tumbles. With 3hours quick-acting charging technology, it will provide more high-efficiency.

Except the general rugged housing, this smart phone also has its rugged GE Sabic material housing for healthcare. With various of optional accessories, it will be suitable for a wide variety of applications, such as logistics, warehousing, retail, government, distribution centers, manufacturing, field service, direct to store delivery, healthcare, laboratory, etc.



Features

- Communication Performance:**4G LTE global band, No dead corner; 802.11ac/a/b/g/n enterprise level independent Wi-Fi; Bluetooth 4.0, low power, long distance, perfect matching wireless printer
- Industrial Protection:** IP65 industrial protection; Optimized structure for battery to ensure slim form factor.
- Scanning Performance:** New generation slim 2D imager scan engine; Support VGA and megapixel versions; Licensed Datalogic decoding technology.
- Unique Product Characteristics:** New generation Quad core or Octa core 2GHz processor, long life cycle; Support Android 9 and Android 10 upgrades;
- Large battery capacity** but refined power consumption, 3 hours charging time but 15 hours working duration, 50 days standby duration
- Free to install** AppLOCK, Easy Deploy and other system management software for efficient management and deployment

Performance

OS:Android 9
CPU:2GHz, Quad/Octa Core, 12nm
MEMORY: 2+16/3+32G
Extend Slot: MicroSD, support SDHC, up to 64GB;
One micro SIM connector
PC Communication: USB 2.0 OTG; Type-C;
Support TYPE-C Headset
Sensors: light, Proximity, 3D G sensor, Hall
LED: Charging, Scan and System status
Charging Time:<3.5 hours(Room Temperature)
Operation Duration:14 hours

Data Collection

Scan Engine: 2D Scan Engine
2D:Aztec Code; China Han Xin Code; Data Matrix;
MaxiCode; Micro QR Code; QR Code; EAN/JAN
Composites; GS1 DataBar Composites; GS1
DataBar Expanded Stacked; GS1 DataBar Stacked;
GS1 DataBar Stacked Omnidirectional; MacroPDF;
MicroPDF417; PDF417; UPC A/E Composites
1D:Auto discriminates all standard 1D codes including
GS1;DataBar™ linear codes.
Post: Australian Post; British Post; China Post; IMB;
Japanese Post; KIX Post; Korea Post; Planet
Code; Postnet; RoyalMail Code (RM4SCC)
NFC(Optional):13.56MHz NFC

Environmental

Operation Temperature: -20°C ~ +50°C
Storage Temperature: -30°C ~ +70°C
Humidity: 10% ~ 90% (non-condensing)
Drop:1.5m, concrete, 12 drops
Tumble:600hits, 0.5m, Steel
IP: IP65
ESD:±8kV contact mode, ±15kV air mode
Keypad lifecycle: 300K

Physical

LCD:4 inch, 800*480, visible under sunshine
Touch:GFF Captive Touch, Dragontrail Glass
Camera :Auto focus 8Mega, with flash LED
Keypad: 24 Numeric Keypad
Left/Right Scan Key, Left/Right K1,K2 user-
defined Key
Back, HOME, Switch
Receiver:Support
Speaker:Min 90db at 10cm-1KHz Voice
Mic:Noise Reduction Mic
Charging IO:USB type-C,
Charging Pad
Battery:Removable 3800mAh-4000mAh
Dimension:160x71x17mm
Weight:269g

Wireless Connectivity

WLAN:802.11 ac/a/b/g/n
WWAN:TDD-LTE (B38/B39/B40/B41)
FDD-LTE (B1/B3/B7)
UMTS/HSDPA/HSPA/HSPA+ (900/2100 MHz)
GSM/EDGE/GPRS (900/1800MHz)
VoLTE:LTE CAT6
CA:Downlink 300Mbps, B1/B3/B7/B40/B41
WPAN:Bluetooth 4.2/BLE
GPS:GPS/A-GPS, GLONASS, Beidou ,Galileo

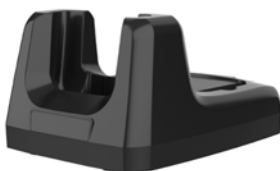
Accessories

Standard Accessories: Black Nylon Handstrap;
Battery Removable 3800mAh-4000mAh
Optional Accessories: Charging Cradle
Support 1 device and 1 battery

Warranty

Warranty:1year (include PDA, Battery, USB wall
adapter, USB cable)

Accessories



Cradle



Handstrap

